



## TECHNICAL BULLETIN:

### **360 BULLET™ 1.25 IN STANDARD - MOUNTING HOLE MODIFICATION FOR JOHN DEERE RIPPERS**

#### **SYSTEMS AFFECTED**

- + 360 BULLET (part number 480150) for **John Deere rippers only!**

#### **ISSUE DESCRIPTION**

- + The mounting bolt can make contact with the point bracket causing the bolt to shear. If this happens, the point will be pulled off of the shank.

#### **TOOLS REQUIRED**

**OPTION 1** 7/16 x 2.75 Grade 5 with 7/16 top lock nut

**OPTION 2** Any of the following tools: die grinder, drill, torch, plasma cutter, grinder, etc.

#### **DETAILS**

360 Dealers and Growers have observed the 360 BULLET ripper point coming off the shank while working fields. Also, the 360 BULLET point does not fit on some select John Deere ripper shanks. There are many different John Deere shanks and significant variation across those shanks. Also, depending on the amount of wear on a JD shank the 360 BULLET point will not fit-up correctly.

The front mounting hole on the 360 BULLET point is for John Deere ripper shanks. There needs to be proper alignment between the hole in the shank and the hole in the point bracket. The point bracket hole needs to be larger so the bolt does not contact the point bracket at all. The bolt is designed to prevent the point from falling off during transportation or any other time the point is out of the soil. If the bolt contacts the point bracket, there is a chance the bolt will shear off and you will lose your point.

#### **MAKE SURE THE POINT BRACKET DOES NOT TOUCH THE BOLT WITH THE BULLET IN ANY POSITION ON THE SHANK.**

You will want to push the 360 BULLET point fully onto the shank and make sure the bolt can move freely. Also, with the 360 BULLET point fully seated on the shank, move the point side-to-side and make sure the bolt can freely move.

**SEE MOUNTING OPTIONS ON THE NEXT PAGE FOR THE TWO OPTIONS TO SOLVE THIS PROBLEM.**

## TECHNICAL BULLETIN:

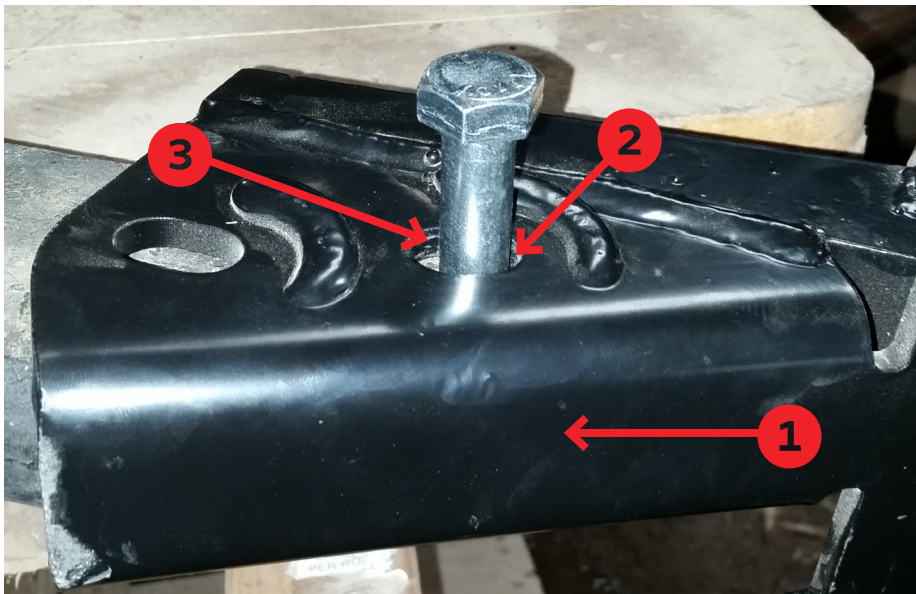
### 360 BULLET™ 1.25 IN STANDARD - MOUNTING HOLE MODIFICATION FOR JOHN DEERE RIPPERS

#### MODIFICATION OPTIONS

**OPTION 1** Instead of using the provided 1/2 X 2.75 Grade 5 bolt, use a 7/16 X 2.75 Grade 5 bolt and top lock nut to attach 360 BULLET point to John Deere ripper shanks.

**OPTION 2** Grind, cut, torch, or ream out the front mounting hole on the 360 BULLET until the bolt can pass in and out of the shank hole with the point in any position on the shank.

**OVERALL, MAKE SURE THE POINT BRACKET DOES NOT RIDE ON THE BOLT, IF IT RIDES ON THE BOLT, THE BOLT COULD SHEAR AND POINT LOSS WILL OCCUR.**



- 1** Make sure to push 360 BULLET point onto shank so that it is completely seated.
- 2** In order to move freely, bolt must not touch the point bracket.
- 3** Also, move point side-to-side on shank and make sure bolt does not touch the top or bottom side of the hole.

#### QUESTIONS

If you have any questions concerning this Technical Bulletin, please contact 360 Yield Center Product Support via email at [support@360yieldcenter.com](mailto:support@360yieldcenter.com) or call us at **(888) 512-4890**.